

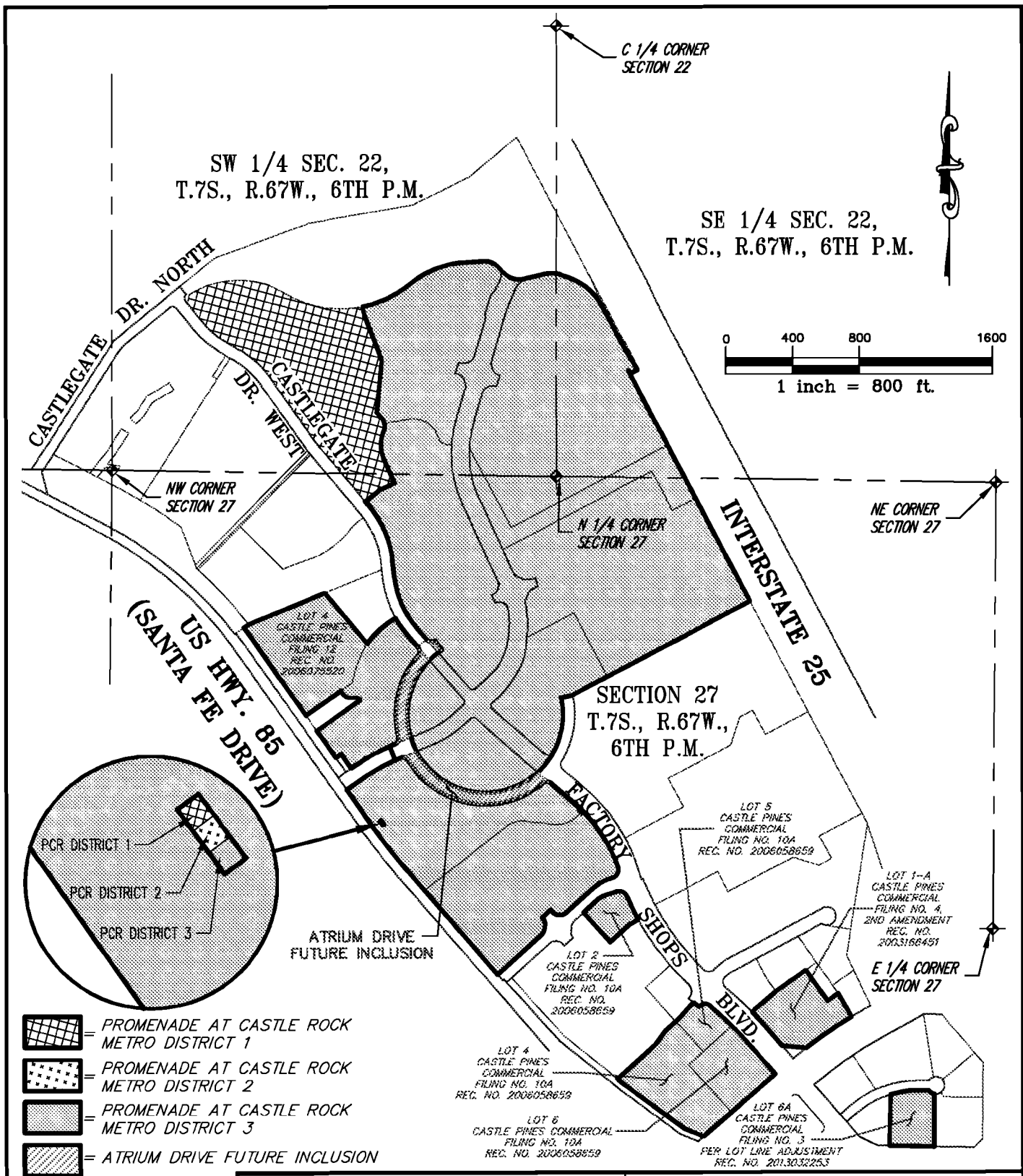
WHEN RECORDED RETURN TO:
WHITE BEAR ANKELE TANAKA & WALDRON
2154 East Commons Avenue, Suite 2000
Centennial, CO 80122

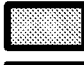
Promenade at Castle Rock Metropolitan District No. 3
In the Town of Castle Rock, Douglas County, Colorado

SPECIAL DISTRICT PUBLIC DISCLOSURE
Pursuant to § 32-1-104.8 C.R.S.

Name of District:	Promenade at Castle Rock Metropolitan District No. 3 ("District")
Powers of the District:	All powers authorized in § 32-1-1004, C.R.S., including, but not limited to, fire protection, mosquito and pest control, parks or recreational facilities or programs, traffic and safety controls, sanitation services, storm, flood and surface drainage, street improvements, lighting, landscaping, television relay, translator facilities and recreation, transportation, water services, and solid waste disposal, subject to the limitations contained in the District's Service Plan.
Service Plan:	The District's Service Plan, which can be amended from time to time, includes a description of the District's powers and authority. A copy of the District's Service Plan is available from the Division of Local Government.
	Promenade at Castle Rock Metropolitan District No. 3 is authorized by Title 32 of the Colorado Revised Statutes to use a number of methods to raise revenues for capital needs and general operations costs. These methods, subject to the limitations imposed by section 20 of Article X of the Colorado Constitution, include issuing debt, levying taxes, and imposing fees and charges. Information concerning directors, management, meetings, elections and current taxes are provided annually in the Notice to Electors described § 32-1-809(1), C.R.S., which can be found at the District office, on the District's web site, on file at the Division of Local Government in the State Department of Local Affairs, or on file at the office of the clerk and recorder of each county in which the special district is located.
District Boundaries:	A map of the District's boundaries is attached hereto as Exhibit A. Please note that the District's boundaries may change from time to time. Please contact the District for the latest information.
Disclosure Replaces and Supersedes Prior Disclosures:	Note that this disclosure document supersedes and replaces all prior disclosures recorded by the District, including, but not limited to, those recorded at Reception No. 2014034284.

EXHIBIT A
District Boundary Map



-  = PROMENADE AT CASTLE ROCK METRO DISTRICT 1
-  = PROMENADE AT CASTLE ROCK METRO DISTRICT 2
-  = PROMENADE AT CASTLE ROCK METRO DISTRICT 3
-  = ATRIUM DRIVE FUTURE INCLUSION

PCR = PROMENADE
AT CASTLE ROCK

AZTEC
CONSULTANTS, INC.

300 East Mineral Ave,
Suite 1
Littleton, Colorado 80122
Phone: (303)713-1898
Fax: (303)713-1897
www.aztecconsultants.com

JOB NUMBER: 03914-01

EXHIBIT
PROMENADE AT CASTLE ROCK METRO. DISTRICTS 1, 2 & 3
DOUGLAS COUNTY, COLORADO

DATE: 2015-02-13

SHT 1 OF 1